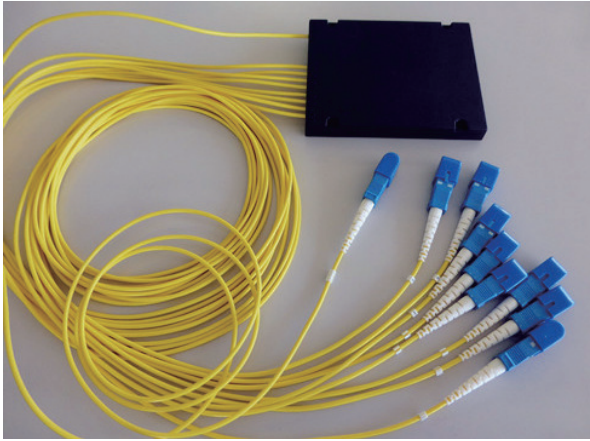


Optical Splitter

FSC121 Series



Features & Benefits

- High performance and reliability
- Module design and easy installation
- Compact size and high density
- Large operating temperature range

Applications

- FTTH optical splitting cabinets and closure
- Rack mount

Specifications

Item	1 × N					2 × N				
	1 × 2	1 × 4	1 × 8	1 × 16	1 × 32	2 × 2	2 × 4	2 × 8	2 × 16	2 × 32
Fiber	SM 10/125 fiber									
Operating Wavelength (nm)	1260-1650									
Insertion Loss* (Without Connector, dB)	≤ 3.7	≤ 7.3	≤ 10.5	≤ 14.1	≤ 17.45	≤ 4.2	≤ 7.5	≤ 11.0	≤ 14.3	≤ 17.5
Insertion Loss* (With Connector, dB)	≤ 4.2	≤ 7.8	≤ 11.0	≤ 14.6	≤ 17.95	≤ 4.7	≤ 8.0	≤ 11.5	≤ 14.8	≤ 18.0
Uniformity (dB) *	≤ 0.9	≤ 2.0	≤ 1.0	≤ 1.5	≤ 2.0	≤ 1.2	≤ 1.5	≤ 1.6	≤ 2.0	≤ 2.5
PDL (dBp-p) **	≤ 0.2	≤ 0.3	≤ 0.3	≤ 0.3	≤ 0.4	≤ 0.3	≤ 0.3	≤ 0.3	≤ 0.4	≤ 0.4
Return Loss (dB)	≥ 50									
Directivity (dB) **	≥ 50									
Dimension (L × W × H mm)***	L100 W80 H10		L120 W80 H18			L100 W80 H10			L120 W80 H18	
Standard Cord Length (m)	2 (φ 2mm cordage)									

* same for UPC and APC polish, test wavelength 1310 & 1550nm ** Without connectors; ***Without cord

Ordering Information

Product Code

FSC121- X -SC / Y

Type of Connector :
 APC : Angled PC
 UPC : UPC

Type of Splitter:

1 × 2: 1 × 2 splitter	2 × 2: 2 × 2 splitter
1 × 4: 1 × 4 splitter	2 × 4: 2 × 4 splitter
1 × 8: 1 × 8 splitter	2 × 8: 2 × 8 splitter
1 × 16: 1 × 16 splitter	2 × 16: 2 × 16 splitter
1 × 32: 1 × 32 splitter	2 × 32: 2 × 32 splitter