

New Products

Board-to-Board Connectors for Mobile Communication Devices FB35AT5/FB35AT6

The FB35AT5/FB35AT6 series are ultra-low profile and ultra-fine pitch connectors designed for mobile communication devices.

Two types of lineup with stacking height of 0.5 mm (FB35AT5) and 0.6 mm (FB35AT6) correspond to a wide range of applications.

These products enable space-saving on the circuit board.

Features

1. High Contact Reliability

They have two-point contact structure to improve the contact reliability.

2. Click Feeling when mated

It has good click feeling to ensure when the plug mated.

3. High Strength and Robust Structure

Metal caps of the plug connector are made by insert molding, and it has a more robust structure.

Metal caps of the receptacle connector also has a more robust structure by placing metal in the center.

4. Power Supply Contact

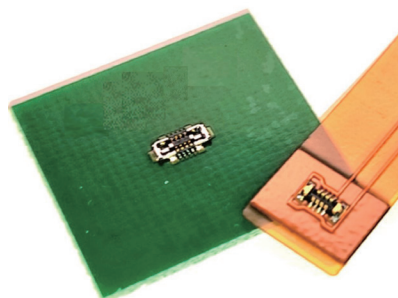
They have two locking tabs that also serve as power terminal.

It can reduce the number of contacts.

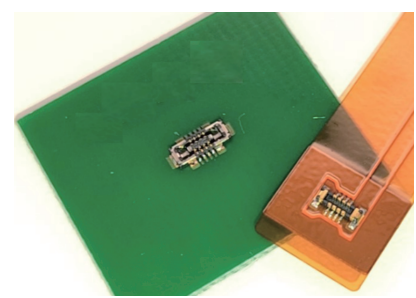
They are also more resistant to deformation than current product by making it harder to touch the root of the spring, which is susceptible to plastic deformation when mated.

Table 1. Specifications.

Items		New product FB35AT5	New product FB35AT6	Current product FB35K
Stacking Height		0.50 mm	0.60 mm	0.60 mm
Contact Pitch		0.35 mm	0.35 mm	0.35 mm
Depth		1.65 mm	1.65 mm	1.80 mm
Power Supply Contact		available	available	available
Current Rating	Signal	0.4 A	0.4 A	0.4 A
	Power	3.0 A	3.0 A	3.0 A
Number of contacts		8 to 50	8 to 50	10 to 50



FB35AT5 Connector



FB35AT6 Connector

Fig. 1. Appearance.

[Information]

Connector Product Development Division

Tel : +81 3 5606 1457

E-mail : ddk.contact@jp.fujikura.com

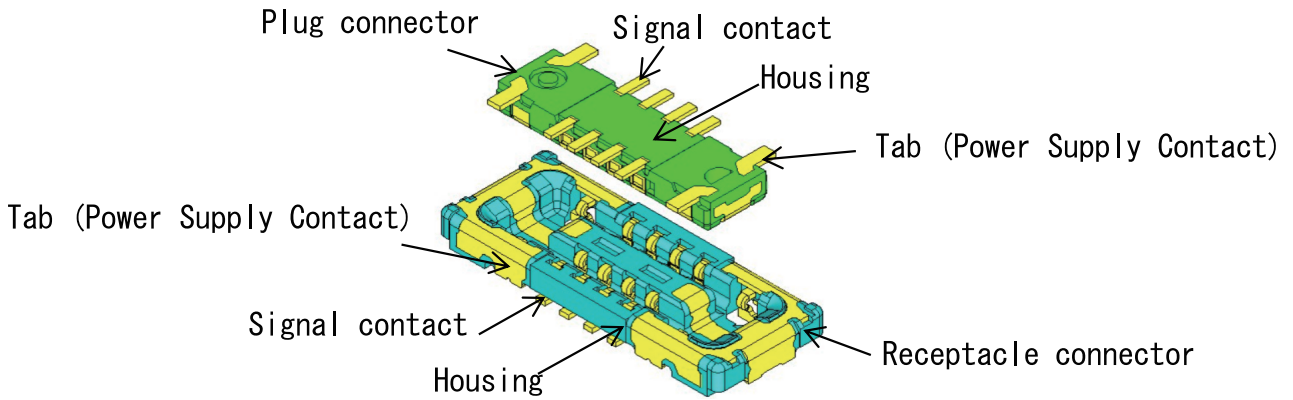


Fig. 2. Component.

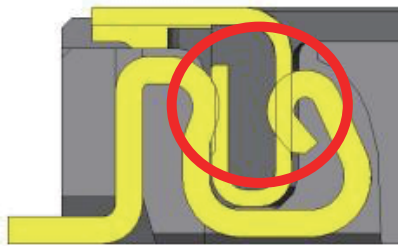


Fig. 3. Two-points contact structure.

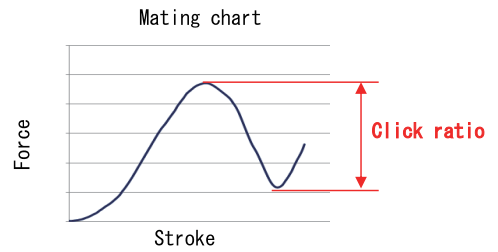
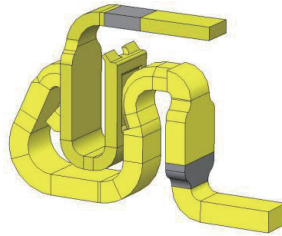
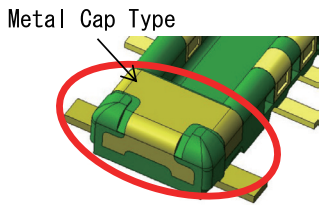


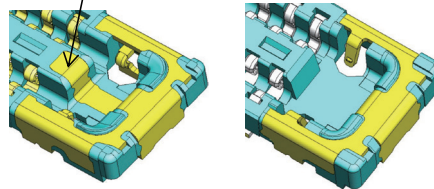
Fig. 4. Click feeling.



FB35AT5/FB35AT6

Fig. 5. High strength and robust structure (Plug).

Inner Metal Armor



FB35AT5/FB35AT6

FB35K (current product)

Fig. 6. Inner Metal Armor (Receptacle).

Two-points Contact Structure

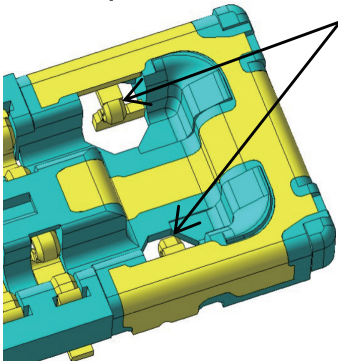
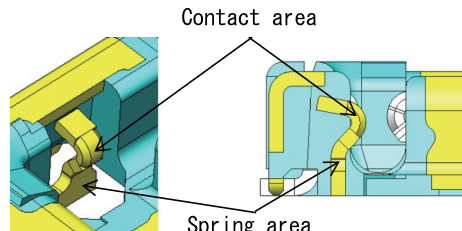
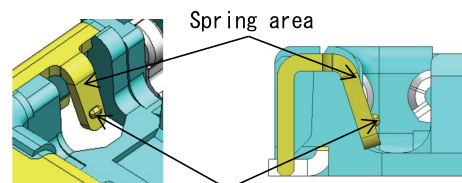


Fig. 7. Power supply contact structure (Receptacle).



FB35AT5 / FB35AT6



FB35K

Fig. 8. Power supply contact structure details (Receptacle).