

FSCO-BU Series



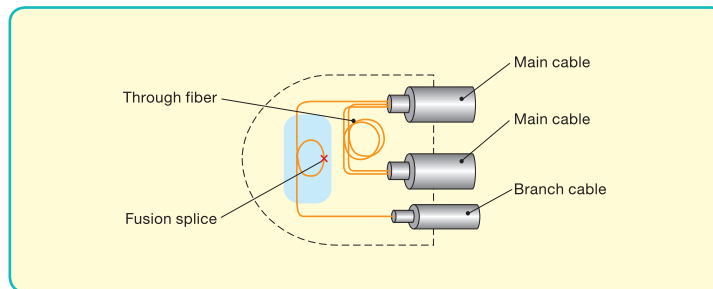
Features

Cable entry section is single-sided dome structure which is suitable for space constrained hand holes (also possible to be used in man-holes, telephone tunnels etc.).

- Closure adopts hinge/buckle mechanism which makes dismantling/ assembling easy.
- Cable entry section can accommodate maximum 8 cables (main cable: 2, branching cable: 6).
- Supports loose tube cables, slotted core cables, and Spider Web Ribbon® (SWR) cables
- Suitable for apply in limited space areas such as hand holes
- Fully mechanical design, fiber reinforced plastic
- Concept of separate cable entries system
- 360-deg access permits complete access to all wirework and equipment

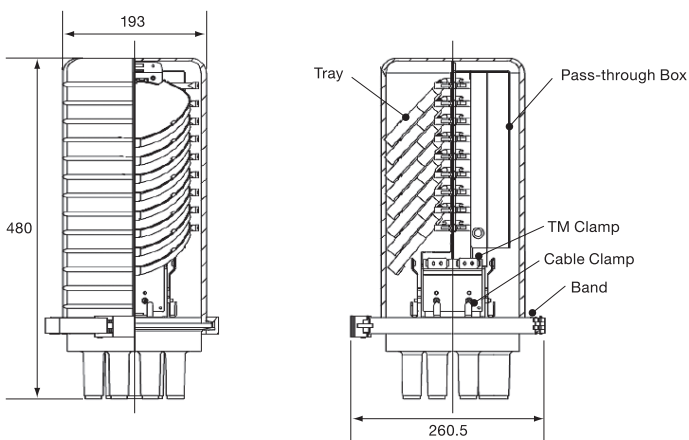
Applications

- Up to 864 fibers (12f-SWR) splicing FTTH distribution networks
- Chemical and mechanical resistance for underground, aerial and pedestal installation

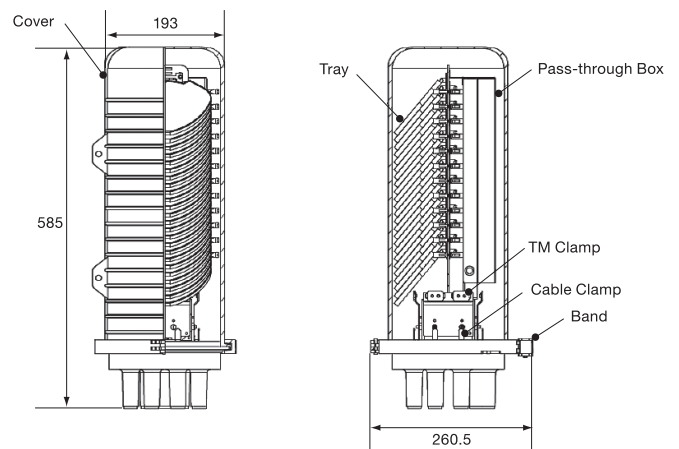


Structure

- Middle Type



- Large Type



Unit: mm

FSCO-BU Series

Specifications

Physical characteristics

Item	Middle Type	Large Type
Material	<ul style="list-style-type: none"> Molded plastic (Cover, Splice tray, Tray base, End plate, Cable clamping) Stainless steel (Tension member clamp) Synthetic rubber (Cover gasket, Valve gasket) 	
Dimension	H480mm × φ260mm	H585mm × φ260mm
Weight (without kit)	Approx. 6.5kg	Approx. 7.0kg
Cable diameter	Main cable: φ10-22 mm, Branch cable: φ10-17.5mm	
Cable capacity	Main cable : 2cables Branch cable : 6 cables	
Cable ports	1 oval port for 2 main cables 6 round ports for branch cables	
Splice tray capacity	12f-SWR	8 trays (6 splices /tray)
	8f-SWR	8 trays (8 splices / tray)
	4f-SWR	8 trays (8 splices / tray)
	Single fiber	17 trays (12 splices /tray)
Splitter capacity *1	SWR	1 × 2: 4pcs, 1 × 4: 2pcs, 1 × 8: 2pcs
	Single fiber	1 × 2: 2pcs, 1 × 4: 1pcs, 1 × 8: 1pcs
Maximum fiber capacity	12f-SWR	48 × 12f-SWR / 576 fibers
	8f-SWR	64 × 8f-SWR / 512 fibers
	4f-SWR	64 × 4f-SWR / 256 fibers
	Single fiber	204 fibers
Unreusable parts	Heat shrink tube, branching clip	

*1 A tray for SWR fiber shall be able to accommodate an optical splitter
Note 1 : Fiber protection sleeve is attached to the product.

Technical characteristics

ITU-T L.13 complied

Vibration IEC61300-2-1	49kPa, A=±5mm, f=10Hz, 1,000,000 Cy, No damage, No leakage.
Cable fixture (bend) IEC61300-2-37	49kPa, ±90° bending radius 6D, 6Cy. No damage, No leakage.
Cable torsion IEC61300-2-5	49kPa, 400mm, ±90 degree, -15°C and 45°C, 5Cy. No damage, No leakage.
Cable axial tension IEC61300-2-4	49kPa, D/45 x 1000N (Max.1000N), 1hr No leakage
Temperature cycling IEC61300-2-22	-20°C ~ 60°C, 8h/Cy 100Cy. Then fill 49kPa air-pressure, No leakage.
Impact IEC61300-2-12	0.5kg, 0.3m @-10C. No damage, No splice case degradation.
Immersion IEC61300-2-23	Water depth 5m, 7days, No water intrusion.
Air tightness IEC61300-2-38	49kPa@Room temperature, 15min. No leakage.
Degrees of protection (IP code) IEC60529	IP67 : Water proof and No effective by duct
Compression IEC61300-2-10	1000N, 25cm ² , 10min, -15°C and 45°C No leakage
Chemical Resistance IEC61300-2-34	pH2, pH12 for 5 days. No leakage, Visual appearance.
Rust resistance IEC61300-2-26	Salt spray 5% NaCl for 5days, No rust

Ordering Information

Product Code

FSCO-BU M 8 - R 8

Type of Closure: BU
(BU: Butt closure)

Size of Closure: M
(M: Middle type)
(L: Large type)

Number of cable : 8 cables

The number of tray: 8 trays
=Ribbon Fiber=
(1~8 for Middle type)
(1~12 for Large type)
=Single Fiber=
(1~17 for Middle type)
(1~24 for Large Type)

Type of fiber tray: R
(R: SWR fiber type)
(S: Single fiber type)

Notes